



Oates & Company

“Putting **TECHNOLOGY** to Work  
for You Every day”

Year End  
2010

# Sage MAS 90 and MAS 500 Newsletter

## In This Issue:

The Year in Review

Year End Tools & Resources

The Road Ahead for Sage MAS 90

MAS 500

Inventory Features You Can Count On

sage

Authorized Partner

## The Year in Review

When it comes to changes and improvements, 2010 was a banner year for your Sage MAS 90 or MAS 200 system. Now more than ever, you get a broader range of features, improved efficiency, and better value for your technology investment. Let's take a look at the year in review.

### Extended Solutions Incorporated Into Core System

Early in the year, Sage announced that many of the most popular Sage MAS 90 and MAS 200 Extended Solutions would be **included** in future product releases, while the least popular and seldom-used would be phased out. This library of over 1,000 optional enhancements required a separate purchase and implementation. But with this announcement, Sage decided to include the most popular enhancements (like Paperless Office) as part of the core MAS 90 and MAS 200 system over the next several product releases and updates. **Bottom Line: More features, no extra cost.**



[Click here](#) to see a list of the Extended Solutions that have either already been incorporated or are planned for future releases.

### Bon Voyage FRx

As you probably know, Microsoft announced plans last year to retire FRx Financial Reporter. Sage immediately began extensive research to find a replacement solution which was identified in 2010 as **Sage MAS Intelligence**. For those of you that gasped when you heard FRx was going away, rest assured that Sage MAS Intelligence offers everything FRx does and more!

First because it's an Excel-based reporting tool, you'll be up and running quickly using a spreadsheet environment you're already familiar with. Plus, Sage MAS Intelligence looks across your entire system combining data from multiple companies (Connector module required), departments, modules, and databases ... an important distinction from FRx which only looks at your General Ledger.



[Email us](#) for a copy of “**Everything You Wanted to Know about Sage ERP MAS Intelligence.**”

### Introducing Sage MAS 90 and MAS 200 Version 4.4

If you're on a current maintenance plan, you probably already received your copy of Sage MAS 90 and 200 Version 4.4. Packed with new features for Core Financials, Manufacturing, and Inventory Control, Version 4.4 offers something for everyone. Download the [What's New in 4.4 Brochure](#) for details.

### Product Updates - A New Approach

In an effort to provide better value to customers that are on a current maintenance plan, this year Sage announced plans to publish **more frequent** Product Updates that provide both fixes **and** new features every three to six months. That way, you get incremental value out of your system without having to wait 12 to 18 months between major new version releases. As of the date of this newsletter, 3 Product Updates have been released in 2010 including new features for Bank Reconciliation, improvements to Paperless Office, ACH Electronic Payments in AP, and much more.



Be sure to contact us with any questions about upgrading, updating, or anything in between!

# 2010 Year End FAQ's

To help you get a jump start on closing the year out smoothly, here are some of the most Frequently Asked Questions and answers related to Payroll, Electronic Reporting, and Accounts Payable.

## When will the year end Tax Table Update (TTU) and Interim Release Download (IRD) be available?

The Q1 TTU and IRD are expected to be available on or about December 17, 2010 and will be available for download from the "Sage MAS Support" section of [Sage Online](#). This download will ensure you have the most up-to-date tax rates for the new year.

Since there are often last minute legislative changes, Sage will update the TTU with late-breaking changes (as necessary) each week throughout January 2011.

## Are changes required this year for companies that must print 1099 forms?

For 2010, there are no new changes to 1099-MISC Form reporting. Form 1099-DIV has form alignment changes for versions 4.20, 4.30, 4.40 and 4.45. With Form 1099-INT, a **new Box 10**, has been added to the forms and will be available in Vendor Maintenance in the grid to enter the CUSIP number. If you're running version 4.3 or higher, these changes are already included in your software. If you are on version 4.2 or below, and your business has the need to complete Box 8 & 9, please go to [www.irs.gov](http://www.irs.gov) for instructions.

## When will the year end Federal and State eFiling and Reporting updates be available?

After December 17th, you can access these updates within the Payroll or Accounts Payable modules.

Simply click "eFiling and Reporting" in Sage MAS 90 or 200 and the system will automatically prompt you to apply the online update.

## Does the IRD support the Qualified Employee reporting as allowed by the HIRE Act?

**Yes.** Customers running one of the supported versions of Payroll must have previously installed the Q2 2010 Payroll Update before installing the 2010 Year End IRD. The Year End IRD includes additional changes to report Code CC in Box 12. A 2010 W-2 HIRE Act Instruction Document will be displayed at the end of the installation of the IRD. These instructions should be printed and delivered to your Payroll Department before W-2s are printed.

## How do I get a logon and access the secure Sage MAS Support website?

If you do not have a current logon to Sage MAS Support, go to [www.sagesoftwareonline.com](http://www.sagesoftwareonline.com) and click the "Register Now" link. You'll need both a current agreement or subscription plan along with your Sage Account number to register. If you have trouble, email [tools.na@sage.com](mailto:tools.na@sage.com) for assistance.



## Get All The Answers!

[Email us](#) to request a PDF copy of the complete 6-page document chock full of nearly 25 FAQs!

# The Road Ahead for Sage MAS 90 & 200

Looking ahead to 2011, here are some of the developments to watch for related to your Sage MAS 90 or 200 system.

## MAS 200 SQL 4.45

Late this year, Sage announced the milestone release of Sage MAS 200 SQL Version 4.45 and this momentum will continue into 2011. Why a milestone? Because this version of MAS 200 SQL is better than ever as it received a complete overhaul from the ground up to take advantage of the Business Framework™ modern architecture. And best of all, the Microsoft SQL Server database provides top-notch performance, speed and scalability.

If you need a more powerful database, expanded customization options, or the ability to integrate multiple software applications, check out the shiny new MAS 200 SQL Version 4.45 at [www.SageMAS.com/MAS200SQL](http://www.SageMAS.com/MAS200SQL).

## Sage Summit 2011

As you know, Sage Summit is the annual conference that helps existing customers like you make the most of your software investment by networking with other customers and interacting with Sage executives and support personnel. For the first time ever, this year's event combines the entire Sage Community including Customers, Partners (like us!), and Sage Developers - all in one place.

Sage Summit 2011 is scheduled for July 2011 and will be hosted at the Gaylord National Hotel and Convention Center in Washington, DC. Visit [www.sagesummit.com](http://www.sagesummit.com) for details and to track ongoing developments.

## Get Ready for Additional Product Updates

**Product Update 4** - Targeted for December 2010, this update will focus on Q1 2011 tax table and year end pay-

roll including W-2 form changes to support the HIRE act.

**Product Update 5** - Scheduled for March 2011, this update continues the trend of incorporating the most popular extended solutions (formerly separately-purchased features) into your core product, adding more value to your maintenance and support plan. 7 additional extended solutions will be added with product update 5.

## Sage MAS 90 and 200 Version 4.5

Looking ahead to Q3 of 2011, Sage MAS 90 and 200 Version 4.5 will "merge" with the Extended Enterprise Suite. That means licensing and functionality of both solutions will be available as a single product, simplifying installation, support, and functionality across ERP, CRM, and Fixed Assets.

Plus, 14 more extended solutions will be added to improve payroll, sales order, accounts receivable and purchase order. And last but not least, a direct path will be provided for MAS 200 customers that would like to upgrade from the ProvideX database to the new SQL platform.

## Version Support Retirement Schedule

As you may know, support for Sage MAS 90 and 200 Version 3.71 was retired as of September 30, 2010. In addition, the following retirement schedule has been provided by Sage:

Product	Retirement
MAS 200 v3.7x - SQL Edition	June 1, 2011
MAS 90 and 200 - Versions 4.0, 4.05, 4.1	Sept 30, 2011



Oates & Company



[Follow us](#)  
on Twitter



[Be Our Fan](#)  
on Facebook

# New Inventory Features You Can “Count” On

If your business carries inventory, thinking about the year end physical inventory process might conjure up nightmares. But it doesn't have to be that way. That's because the Physical Count process in Sage ERP MAS 500 Version 7.3 has been enhanced with significant workflow and user interface improvements. Let's take a look at some of the new features you can count on.

## Easier Data Entry and Better Control

The “Enter Counts” screen now offers an easy to use Grid Entry interface that has become popular and prevalent throughout MAS 500. Entering counts directly in the grid provides for fast and efficient data entry without having to navigate through a lot of fields and screens.

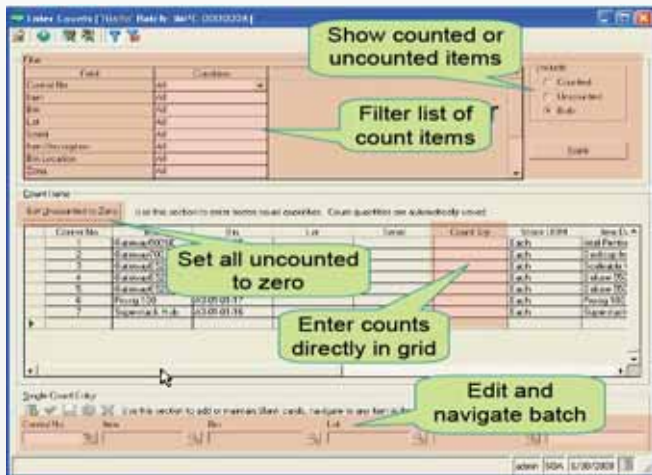
The Version 7.3 Physical Count process also offers expanded item selection criteria and sort order control, making it easier than ever to select which items to dis-

play, set the control order, and save your count settings for future use. When in the Enter Counts task, you can now filter a list of count items, include counted or uncounted items (or both), enter counts directly into a grid, and edit batch information.

## My Old Friend, Excel

If you're someone who loves Microsoft Excel and prefer to enter counts there, you'll be happy to learn that you can now select items to be counted in Sage MAS 500, export them to Excel, and enter count quantities using a spreadsheet. Once the count is complete, you can use the DataPorter module to seamlessly bring that information back into MAS 500 without duplicate data entry or manual reconciliation.

A couple of other nice features include the ability to automatically set uncounted items to zero, delete frozen controls from a batch, and a new detailed transaction report and history table that will come in handy during an audit.



Easy-to-use Grid Entry and powerful filter criteria saves time and keystrokes.



## EVERYTHING YOU WANT TO KNOW ABOUT SMI

With the retirement date for FRx just around the corner, it's time to get familiar with your new reporting tool - **Sage MAS Intelligence**.

[Contact us](#) for a copy of “Everything You Want to Know About SMI”

JOHN SHEPPERSON | JOHN@OATESCO.COM | (336) 230-0200

**CONTACT US ...**



Oates & Company

2309 West Cone Blvd. - Suite 220 | Greensboro, North Carolina 27408 | [www.oatesco.com](http://www.oatesco.com)